

# CASE STYLES

## OUTLINE DIMENSIONS (inch/mm)

case no.	A	B	C	D	E	F	G	H	J	K	L	M	N	P	Q	R	S	T	wt. grams.	NOTES*	
BB48	.50 12.70	.39 9.91	.225 5.72	.025 0.63	.07 1.78	.100 2.54	.250 6.35	.350 8.89	.06 1.52	.31 7.87									3.0	A1, E1	
BG291	.870 22.09	.800 20.32	—	.100 2.54	.250 6.35	.100 2.54	.100 2.54	.047 1.19	.065 1.65	.065 1.65	.890 22.60								4.0	A27, F21	
BG419	.870 22.09	.800 20.32	—	.100 2.54	.400 10.16	.100 2.54	.100 2.54	.047 1.19	.065 1.65	.065 1.65	.890 22.60								6.4	A27	
BH292	.280 7.11	.31 7.87	—	.100 2.54	.225 5.72	.055 1.40	.100 2.54	.047 1.19	.065 1.65	.065 1.65	.300 7.62								.45	A24, F24	
BJ293	.395 10.03	.500 12.70	—	.100 2.54	.230 5.84	.100 2.54	.100 2.54	.047 1.19	.065 1.65	.060 1.52	.425 10.08								.80	A19, F23	
BJ360	.450 11.43	.800 20.32	—	.100 2.54	.250 6.35	.100 2.54	.200 5.08	.047 1.19	.065 1.65	.065 1.65	.480 12.19								1.7	A31, F38	
BJ398	.305 7.75	.390 9.91	—	.100 2.54	.100 2.54	.045 1.14	.100 2.54	.047 1.19	.065 1.65	.065 1.65	.325 8.26								.20	A19, F29	
BK276	.470 11.94	.803 20.40	—	.100 2.54	.250 6.35	.102 2.59	.100 2.54	.047 1.19	.065 1.65	.065 1.65	.490 12.45								3.0	A27, F22	
BK343	.460 11.68	.768 19.51	—	.100 2.54	.155 3.94	.084 2.13	.100 2.54	.047 1.19	.065 1.65	.065 1.65	.480 12.19								1.5	A27, F27	
BK377	.505 12.83	.789 20.04	—	.100 2.54	.250 6.35	.095 2.41	.100 2.54	.047 1.19	.065 1.65	.065 1.65	.525 13.34								3.0	A27, F28	
BL301	.940 23.88	1.260 32.00	—	.100 2.54	.390 9.91	.080 2.03	.100 2.54	.047 1.19	.065 1.65	.065 1.65	.970 24.64								7.2	A19, F25	
BL372	.940 23.88	1.426 36.22	—	.100 2.54	.250 6.35	.163 4.14	.100 2.54	.047 1.19	.065 1.65	.065 1.65	.970 24.64								6.4	A27, F39	
BN333	1.680 42.67	2.130 54.10	3.6 91.44	7.5 190.50	.740 18.80	.42 10.67	1.32 33.53	.30 7.62	.55 13.97	.14 3.56									755	A22, D17	
BR386	3.25 82.55	1.38 35.05	1.25 31.75	.71 18.03	1.13 28.70	.125 3.18	2.25 57.15	.71 18.03	.41 10.41	.98 24.89	1.28 32.51	2.950 74.93	.15 3.81	1.100 27.94	.14 3.56	.150 3.81				180	A4,A18,D17
BT412	9.50 241.30	7.3 185.42	6.3 160.02	6.00 152.40	.98 24.89	3.75 95.25	.13 3.30	.75 19.05	.30 7.62	1.00 25.40	.48 12.18	1.91 48.51	1.3 33.02	2.50 63.50	.9 22.86	5.30 134.62	5.1 129.54	5.2 132.08	4000	A8, D17	
BT451	9.50 241.30	7.3 185.42	6.3 160.02	6.00 152.40	.98 24.89	3.75 95.25	.13 3.30	.78 19.81	.31 7.87	1.48 37.59	1.48 37.59	2.45 62.23	1.1 27.94	2.95 74.93	.5 12.7	6.00 152.40	5.1 129.54	5.2 132.08	4000	A8, D17	
BU413	1.00 25.40	.75 19.05	.58 14.73	.50 12.70	.29 7.37	.38 9.65	1.40 3.56	—	.687 17.45	—	.32 8.13	.13 3.30	.10 2.54	.16 4.06	—	—				25	A4,C1,D6

tolerance .x±.1 .xx±.03 .xxx±.015 inch

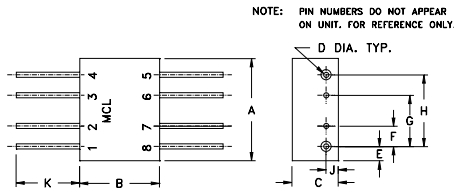
oz. = grams x.0353

### \*NOTES:

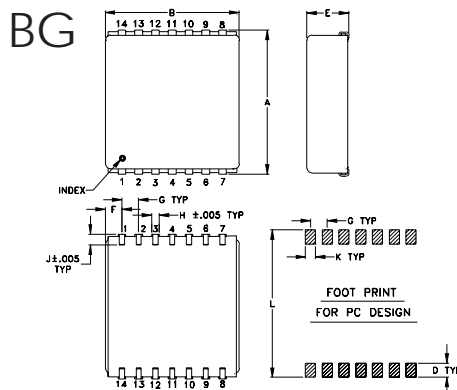
- A. MATERIAL AND FINISH  
 A1. Header material: C. R. S. Pin material: #52 alloy. Finish: electro tin, hot oil flowed. Cover material: cupro-nickel.  
 A4. Case material: aluminum alloy. Finish: irridite per MIL-C-5541  
 A8. Case material: aluminum alloy. Finish: case irridite. Heat sink black anodize.  
 A18. Mounting bracket finish: irridite or clear anodize.  
 A19. Case material: plastic, G-10 base. Termination finish: solder plate  
 A22. Case material: aluminum alloy. finish: nickel plate. Heat sink: black anodize.  
 A24. Case material: ceramic, Lead finish: solder plate  
 A27. Header: Glass epoxy laminate. Cover: Cupro-nickel, bright-burnish Leads: Solder-plated iron-nickel alloy.  
 A31. Case material: Brass alloy, tin plated. Header: G-10 base. Termination finish: solder plate.
- C. MARKING:  
 C1. For port markings 1,2, and 3 see specification data sheet.
- D. CONNECTORS  
 D6. Connectors: female SMA only. Male SMA available on request, consult factory.  
 D16. Connectors: please specify. Unless otherwise noted SMA is standard for ZHL-2-12; for all other models BNC is standard. TNC, N, SMA available on request, consult factory.  
 D17. Connectors: Female SMA only.
- E. SPECIAL TOLERANCES  
 E1. Pin diameter ±.005 inch.
- F. PACKAGING  
 F1-39. Tape and reel packaging available. See Tape & Reel packaging information for details. To order Tape & Reel version add -TR suffix to model.

OUTLINE DRAWINGS

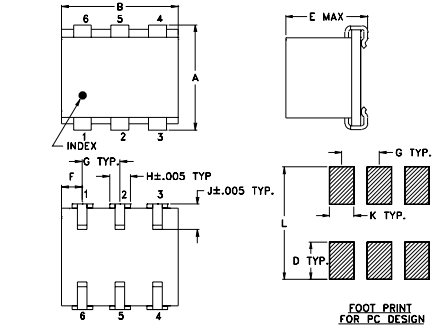
BB



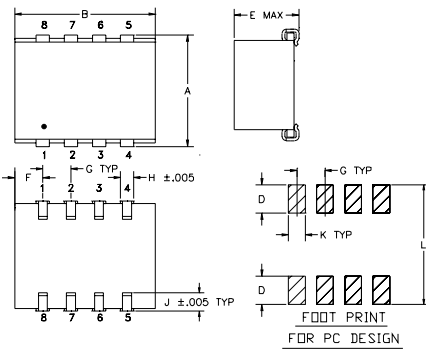
BG



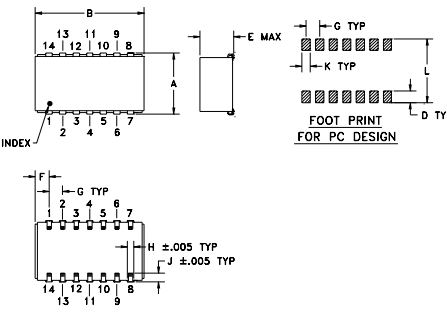
BH



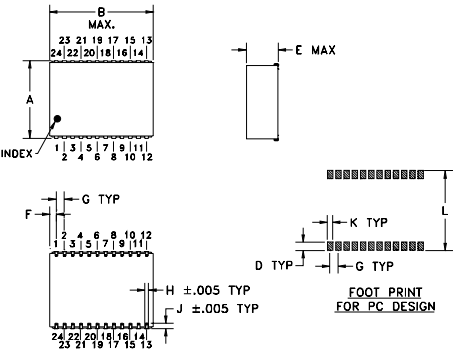
BJ



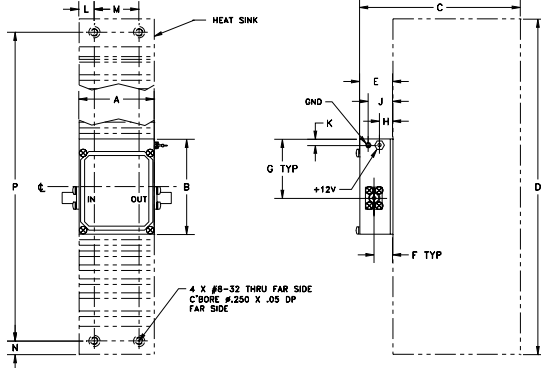
BK



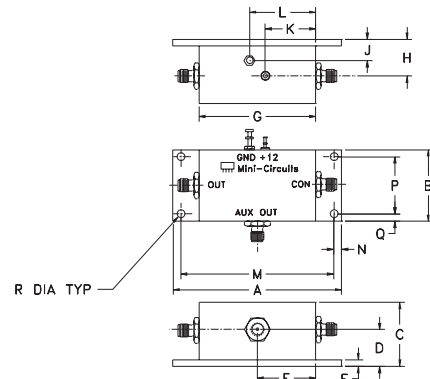
BL



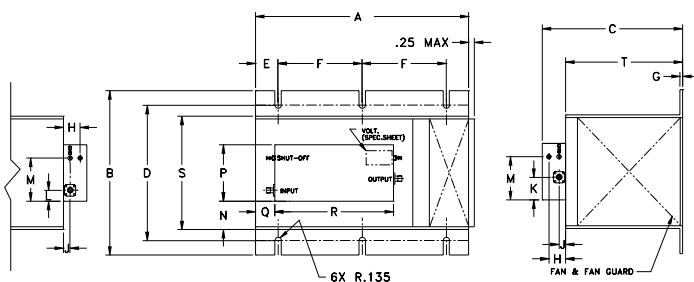
BN



BR



BT



BU

